

Choice Solo App Quick Installation Guide

Thank you for trying the ChoiceSolo App, the first (and only?) commercial electronic enrichment tool for NHPs. This Guide is intended to help you get the ChoiceSolo App installed on a touchpad or tablet.

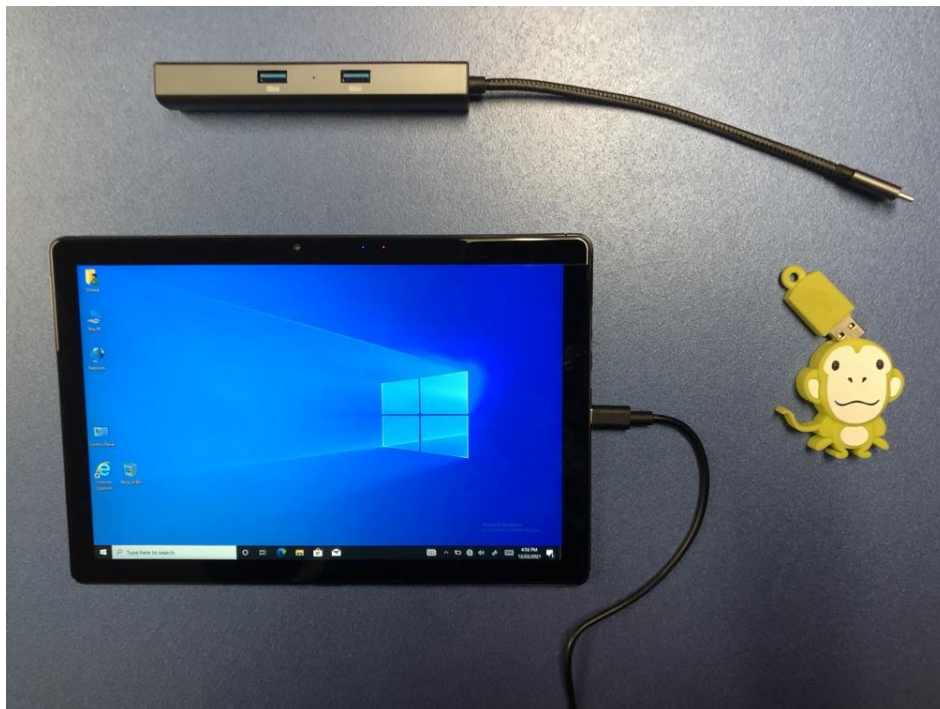
Prerequisites:

1. Tablet or Touch Pad running Windows 10.
2. A Thumb drive with the ChoiceSoloApp.msi installation package.
3. USB-B to USB-C connector.

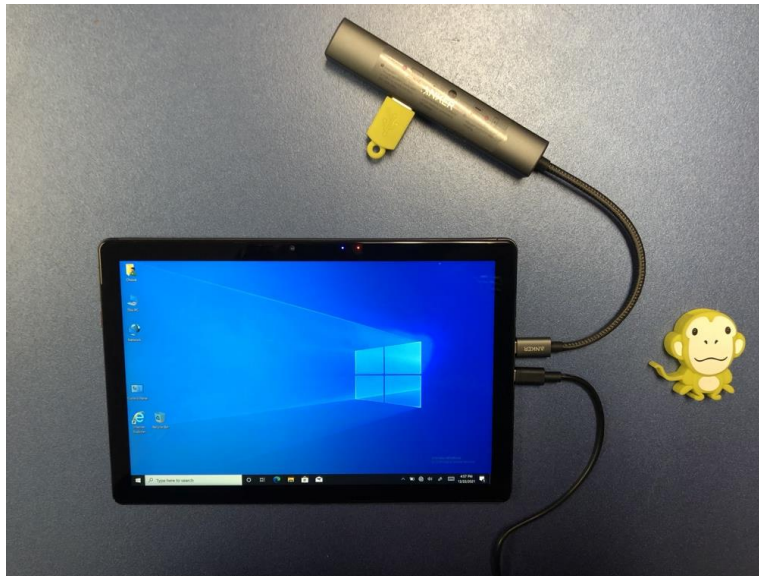
Step 1: Gather components.

In the photo below, we have a Windows based tablet (running Win10), a thumb drive which contains the ChoiceSolo installation file(s) and a USB-C to USB-B “dongle”. You may or may not need the USB-C converter...it depends on the USB ports available on your tablet.

- If your tablet has a USB-B port, then you won’t need the dongle. You can just connect the Thumb drive directly to the tablet via the USB-Port.
- Many newer tablets only offer the smaller and faster USB-C ports. In this case, then you need a dongle that allows for the use of USB-B devices.



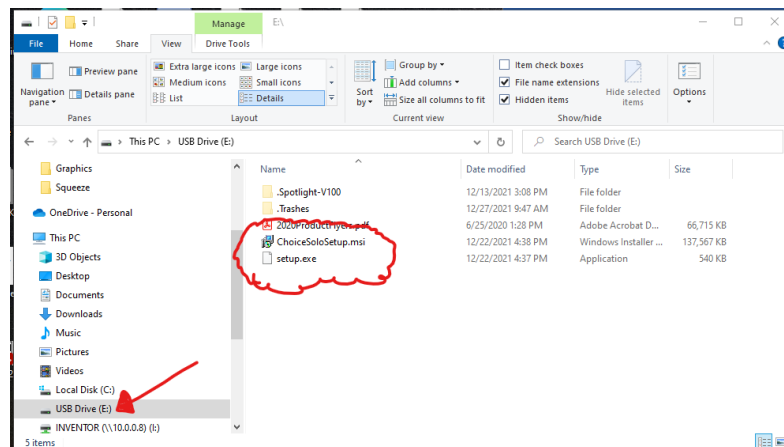
Step 2: Connect your Thumb drive to the Tablet.



Step 3: Open the Thumb drive contents in Windows File Explorer.

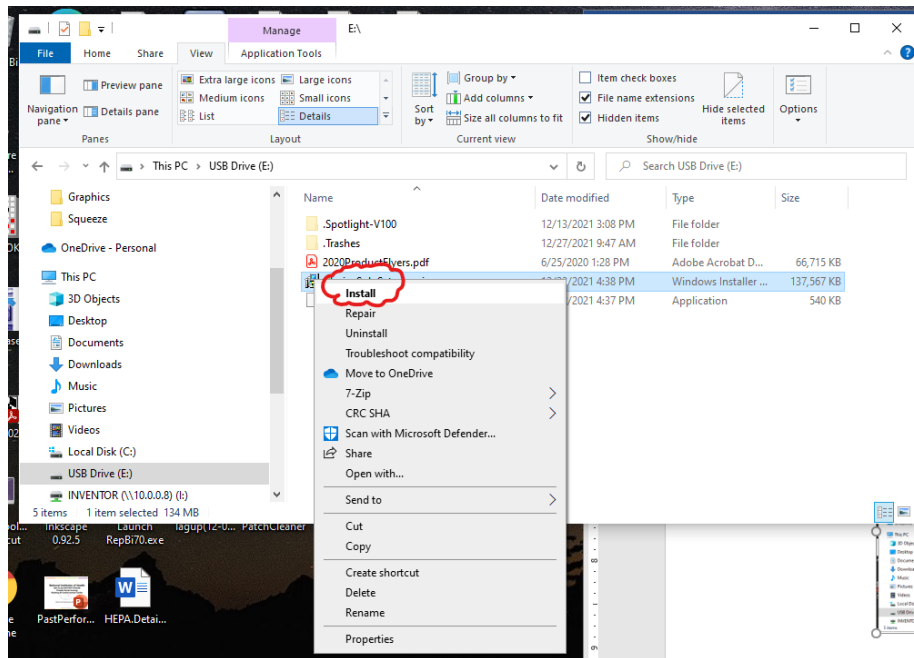
Open Windows file explorer so that you can see the files on the thumb drive. Typically, Windows will recognize the thumb drive as a USB Drive lettered “E:”. You should see two files in particular:

- ChoiceSoloSetup.msi
- Setup.exe

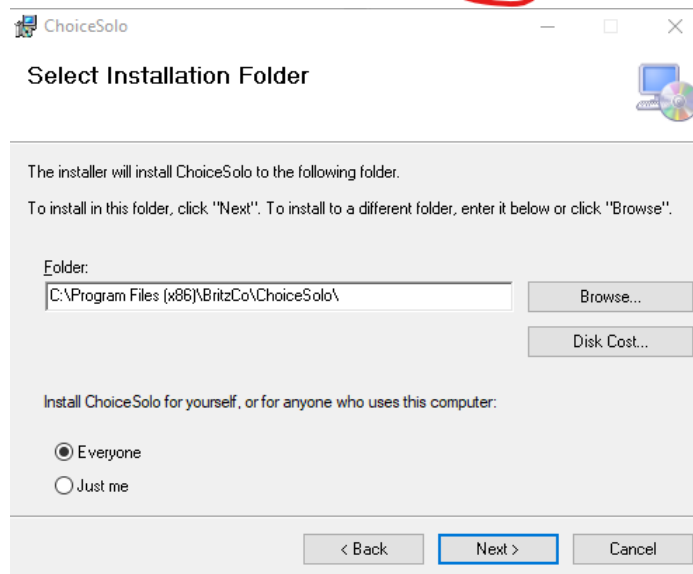
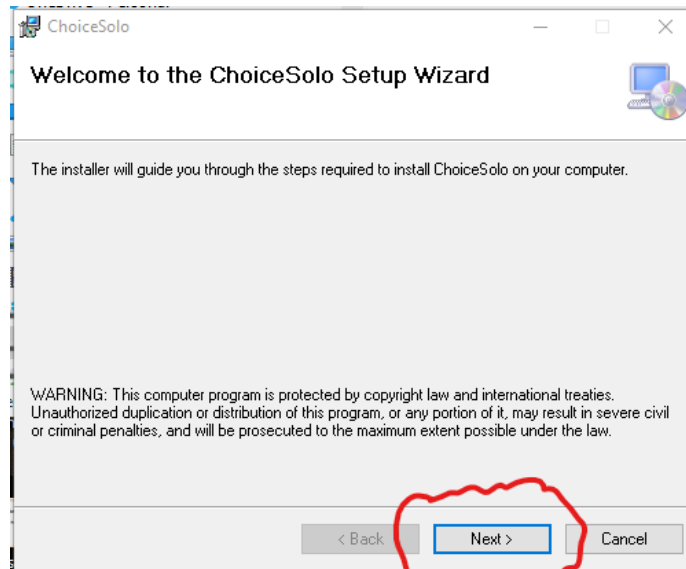


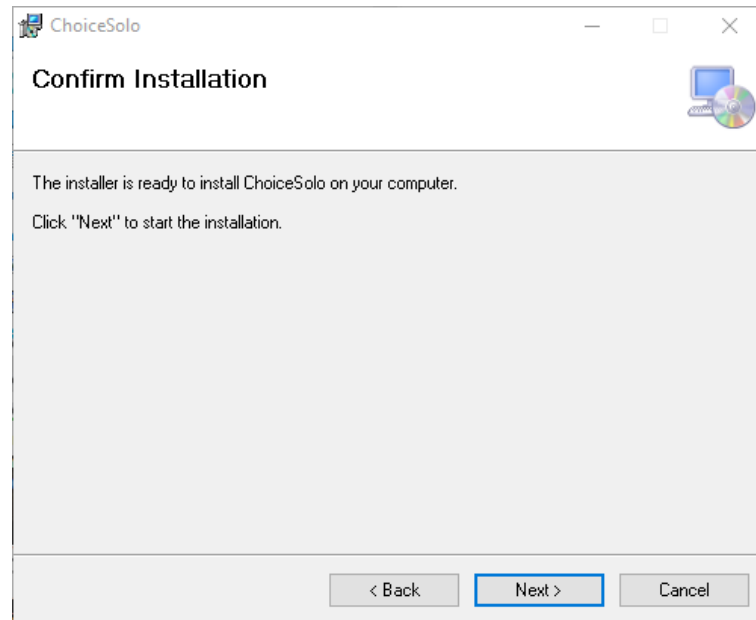
Step 4: Start installation.

Using the tablets touch screen, you should be able to touch-and-hold the file ChoiceSoloSetup.msi to display a pop-up menu, as shown below. At the top, click/select “Install”. This will start the installation process.

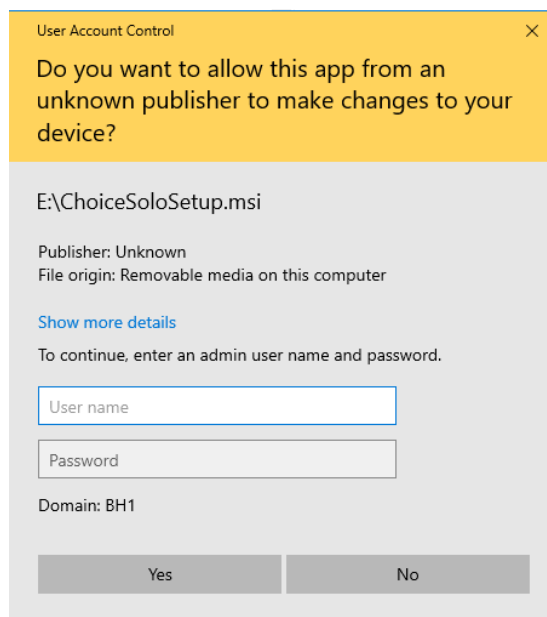


Step 5: Follow the Setup Wizard and select the defaults to each screen.

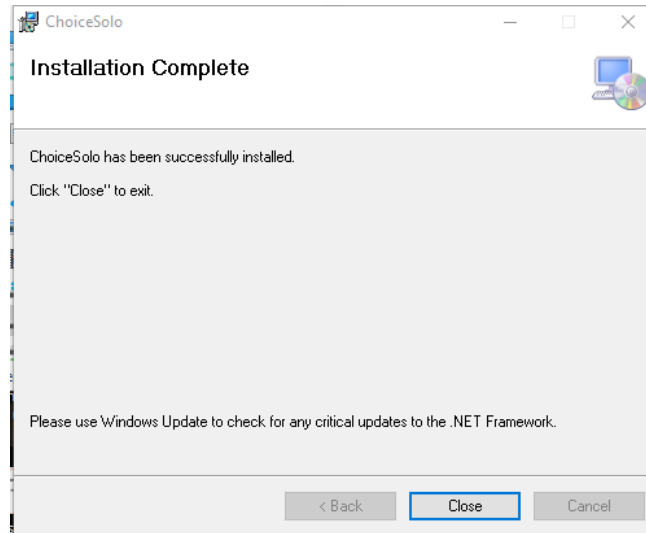




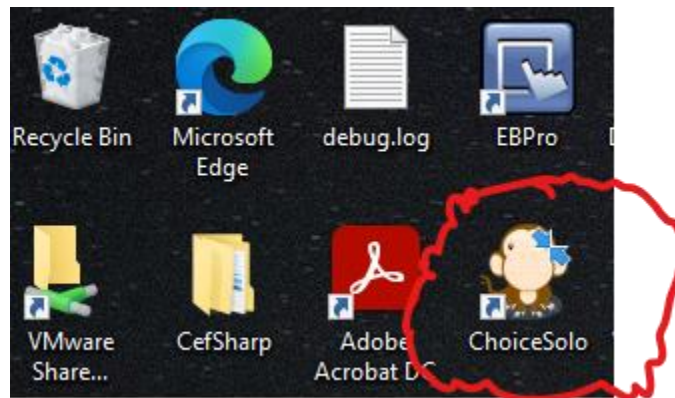
You will likely see a warning message from Windows User Account Control asking permission for the ChoiceSoloSetup.msi to make changes to your computer. Enter a user name with administrative rights and a password (if there is one) and press YES to continue the installation.



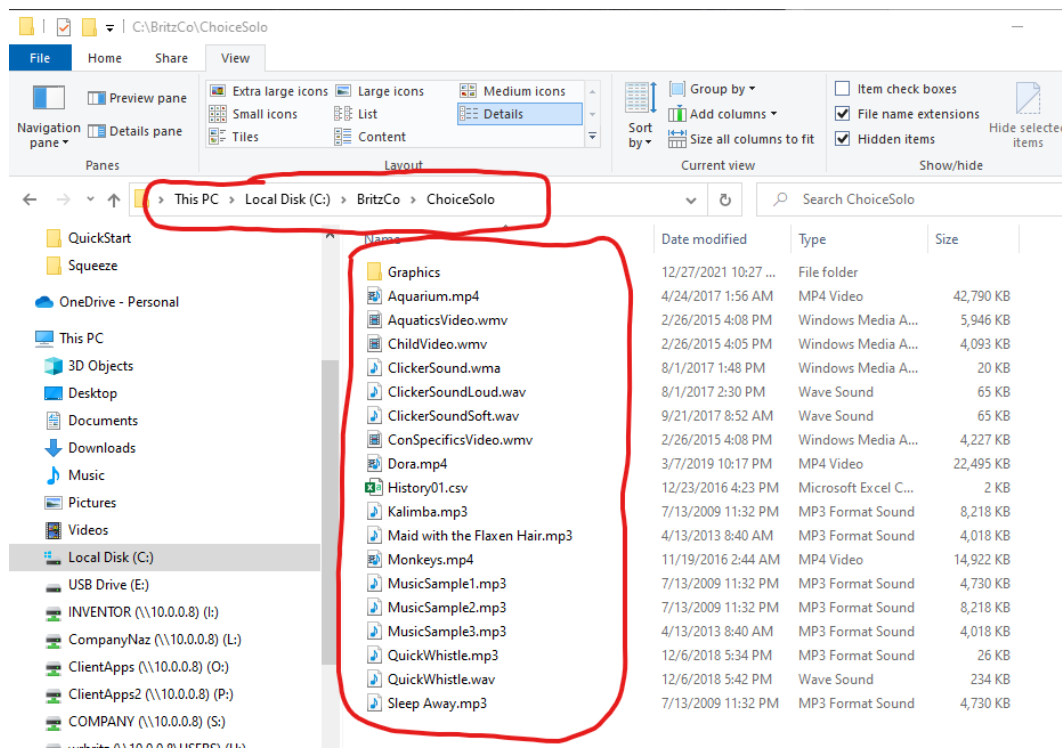
An installation progress window will appear followed by the Installation Complete window.



You can press "Close". You should now have a shortcut on the desktop to the ChoiceSolo App!



The Setup tool will also load all the graphics and sample media files on the Tablet's C: drive. Use Windows file explorer again to navigate to C:\BritzCo\ChoiceSolo. You should see the files shown in the example below.



Step 6: Clean up.

That's it! You did it! You can start the application right away by double-clicking the app icon on the desktop.

You can remove the USB thumb drive now.

A thumb drive is a great way to move files to/from your tablet. You can transfer your own music and video files. Or you can copy and move History data that you have collected for analysis on your office workstation using a spreadsheet tool.

Step 7: Help!!

If you get stuck, just call! 307-322-4040...ask for Bill Britz.